



LEADER IN INNOVATION



F2350RL.2-HXP
TECHNO



F2350RL.2-HXP TECHNO

Overview



F2350RL.2-HXP TECHNO

The **F2350RL.2 HXP TECHNO** represents the most advanced and highest-performing solution in the Fassi range for the heavy-duty segment.

Designed to go beyond the traditional limits of lifting, it combines structural innovations, the most advanced TECHNO electronic systems and unprecedented operating configurations.

Available in versions with 8 or 10 hydraulic extensions, the F2350RL.2 HXP TECHNO can be configured with different combinations

of hydraulic jibs to meet the most complex operating requirements.

The 8-extension configuration with double hydraulic jib has been developed to ensure outstanding performance in operations requiring high working heights.

In this configuration, the crane achieves an industry benchmark: articulation of the second jib beyond 50 metres, with an over-roof horizontal outreach of up to 8 metres and a maximum working height of 58 metres in vertical configuration.

 Max. outreach

50,60 m

with jib

 Max. lifting class

142,1 tm

1394 kNm



F2350RL.2.10

	10°												
MAX.	22645	15240	11065	8335	6540	5310	4380	3715	3215	2860	2410		kg
30000	6.15	8.60	11.05	13.60	16.15	18.70	21.25	23.65	26.05	28.40	31.20		m

Integrated systems and technologies



FSC TECHNO

A system that allows the operator to select, at any time, the most suitable stability mode: proportional to the extension of the outriggers or based on the inclination of the vehicle.



X-DESIGN

Thanks to the new decagonal section, lifting capacity is increased, especially during vertical lifting operations, while torsional resistance is improved.



RADIO REMOTE CONTROL V7S AND FX911 TOUCHSCREEN DISPLAY

A colour display providing real-time operating data, limits and stability conditions.



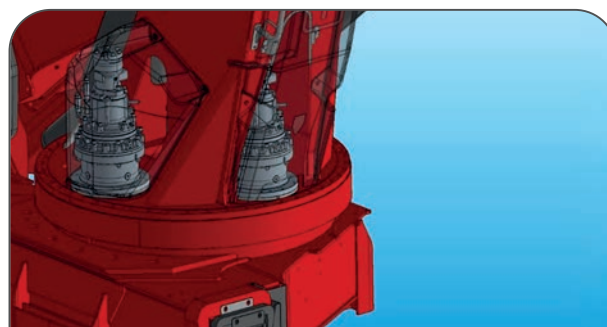
IMC INTEGRAL MACHINE CONTROL

A function that enables both crane and outrigger movements to be controlled via radio remote control.



DUAL OIL COOLER

Designed to ensure more efficient cooling of the hydraulic oil, even in the most demanding working conditions or during intensive use.



DUAL SLEWING GEARMOTOR

Ensures smooth and continuous slewing movement and higher slewing torque.



CCD CABIN COLLISION DETECTION

Using position sensors, the system creates a virtual **safety cage** above the truck cab to ensure maximum safety.



IOC INTERNET OF CRANES®

The IoC system connects Fassi cranes online, providing **real-time monitoring** to reduce machine downtime and operating costs.

Advances solutions



RSC **REMOTE SMART CAM**

Real-time images on the V75 radio remote control display ensure accurate monitoring of the working area. Tilting magnetic mount for fast, practical and versatile positioning.



ACF **AUTOMATIC CRANE FOLDING**

Allows fully automatic opening and folding of the crane.



PERMANENT **PULLEYS**

Switching from transport configuration to operating configuration becomes faster and easier for the operator.



JIB **AND JDPX FUNCTION**

An evolution of the JDP system, it automatically adjusts the capacity of the hydraulic jib according to the extension of the crane boom sections, optimising jib performance.



AWC
AUTOMATIC WINCH CONTROL

Automates winch rope movements, keeping the distance between the pulley and the lifting hook constant.















OHT
OUTRIGGER HYDRAULIC TILT













The hydraulic rotation of the outriggers allows the operator to complete the stabilization process using only the movements of the remote-control levers.

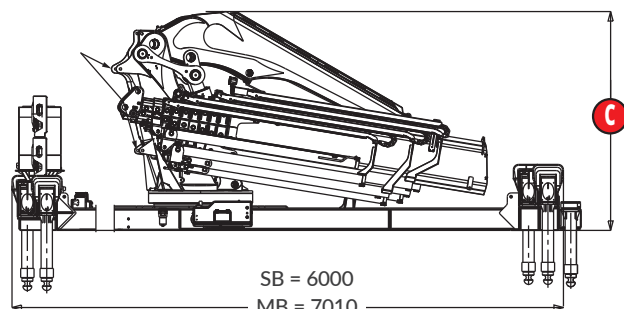
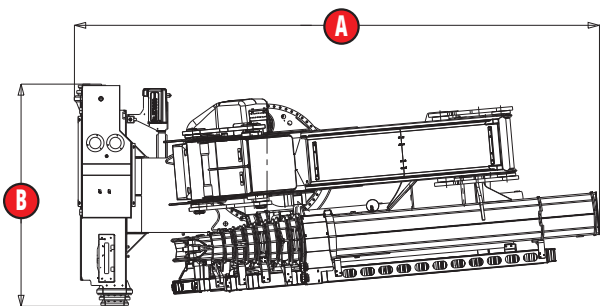


F2350RL.2-HXP TECHNO standard versions

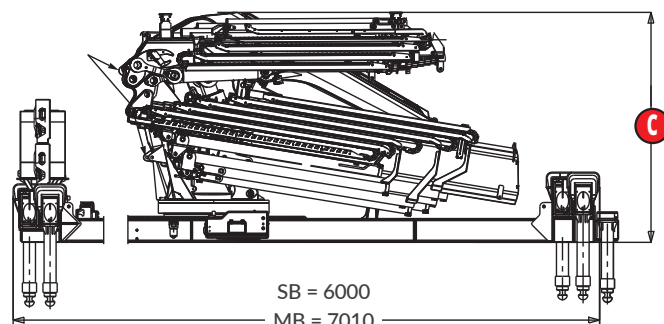
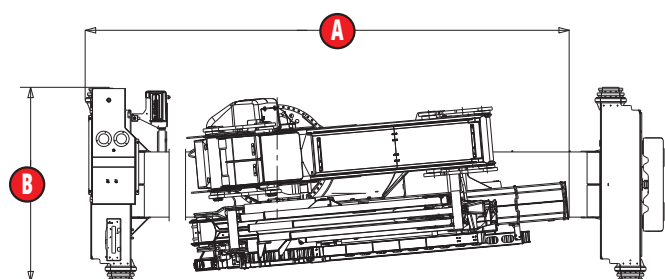
	 Lifting capacity (tm)	 Standard outreach (m)	 Hydraulic extension (m)	 Slewing	 Slewing torque (kNm)	 Working pressure (MPa)	 Pump flow rate (l/min)	 Tank capacity (l)	 Crane weight (kg)	 Crane width (mm)	 Mounting width (mm)	 Crane height (mm)
F2350RL.2.8	142,10	26,15	20,30	360°	130,0	35,5	100+100	500	16950	6000	2535	2900
F2350RL.2.10	139,30	31,20	25,05	360°	130,0	35,5	100+100	500	17850	6000	2535	2900

F2350RL.2-HXP TECHNO versions with JIB

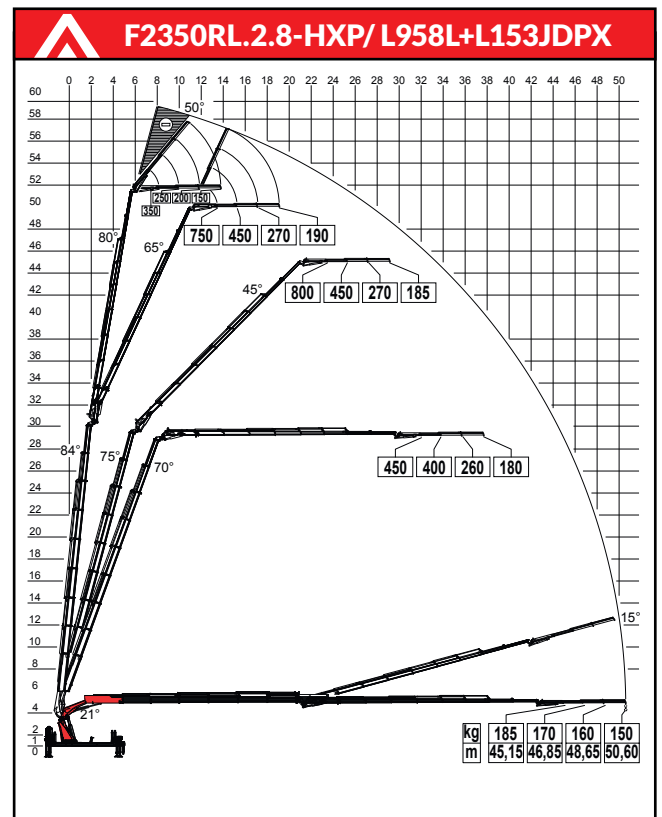
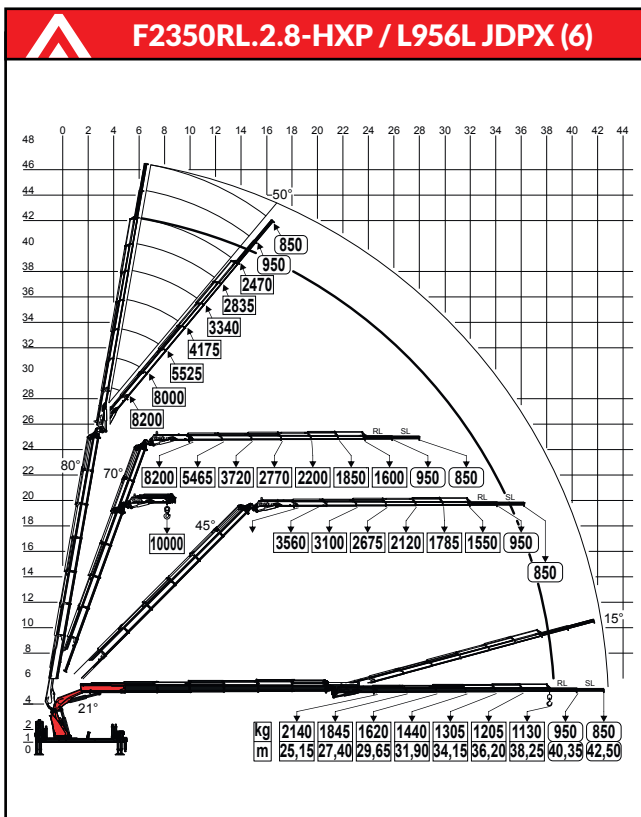
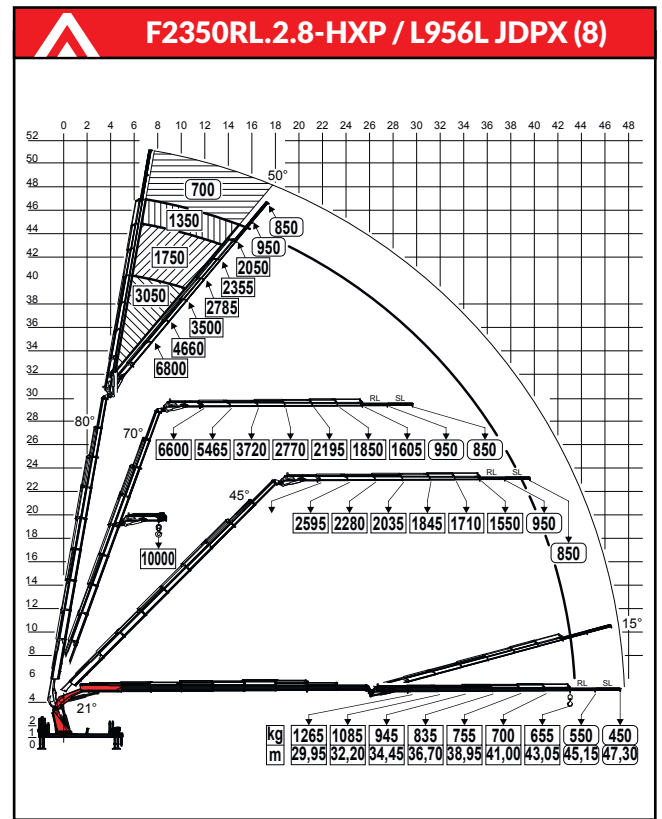
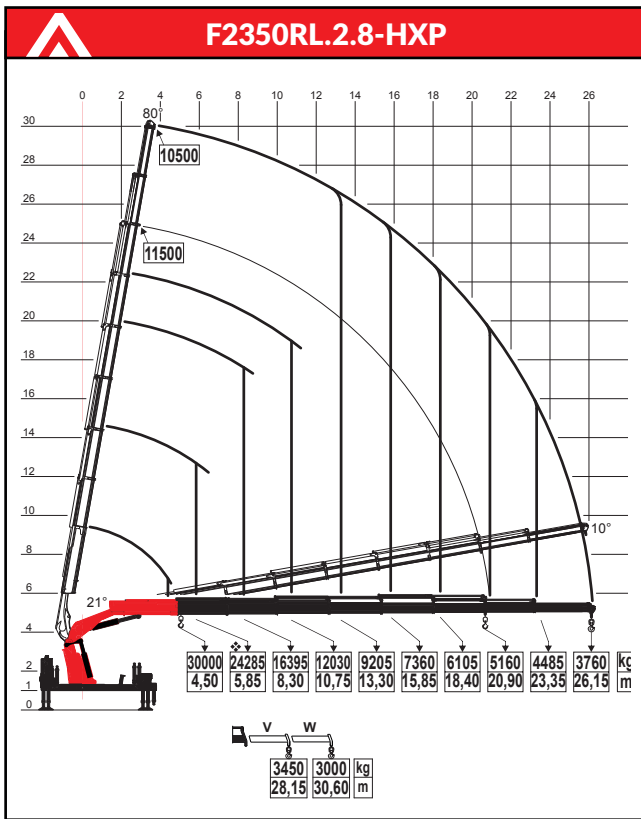
	 Lifting capacity (tm)	 Standard outreach (m)	 Hydraulic extension (m)	 Slewing	 Slewing torque (kNm)	 Working pressure (MPa)	 Pump flow rate (l/min)	 Tank capacity (l)	 Crane weight (kg)	 Crane width (mm)	 Mounting width (mm)	 Crane height (mm)
F2350RL.2.8 L956L	142,10	43,05	32,96	360°	130,0	35,5	100+100	500	19600	6000	2535	2900
F2350RL.2.8 L957L	142,10	45,15	35,01	360°	130,0	35,5	100+100	500	19750	6000	2535	2900
F2350RL.2.8 L958L	142,10	47,30	37,06	360°	130,0	35,5	100+100	500	19850	6000	2535	2900
2.8 L958L + L153	142,10	50,60	40,70	360°	130,0	35,5	100+100	500	24800	8392	2540	2895
F2350RL.2.10 L626L	139,30	49,80	43,86	360°	130,0	35,5	100+100	500	19775	6000	2535	2900
F2350RL.2.10 L958L	139,30	46,35	41,76	360°	130,0	35,5	100+100	500	20500	6000	2535	2900

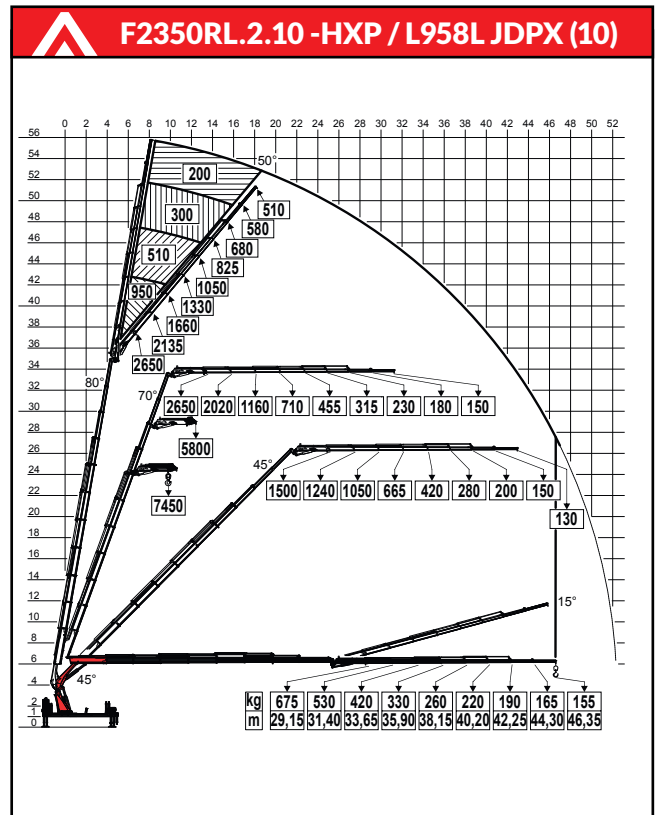
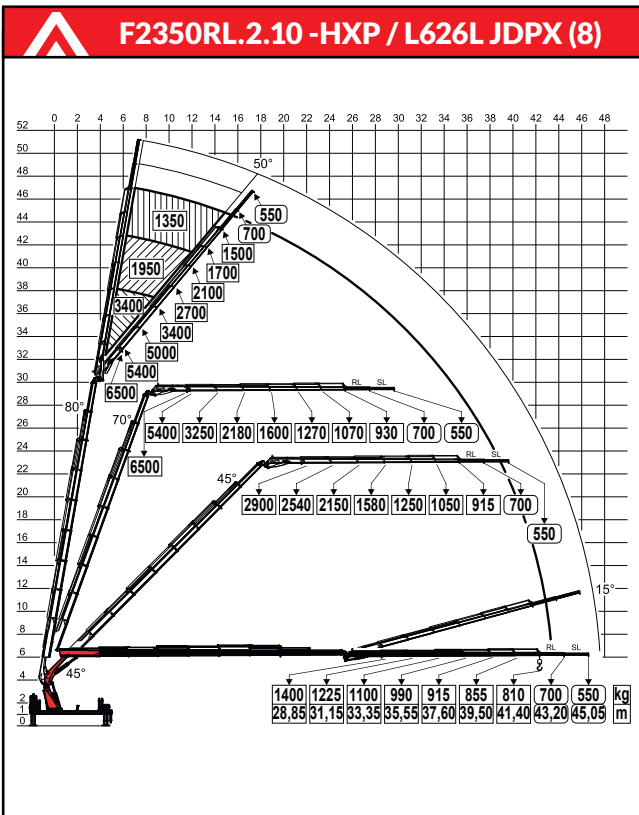
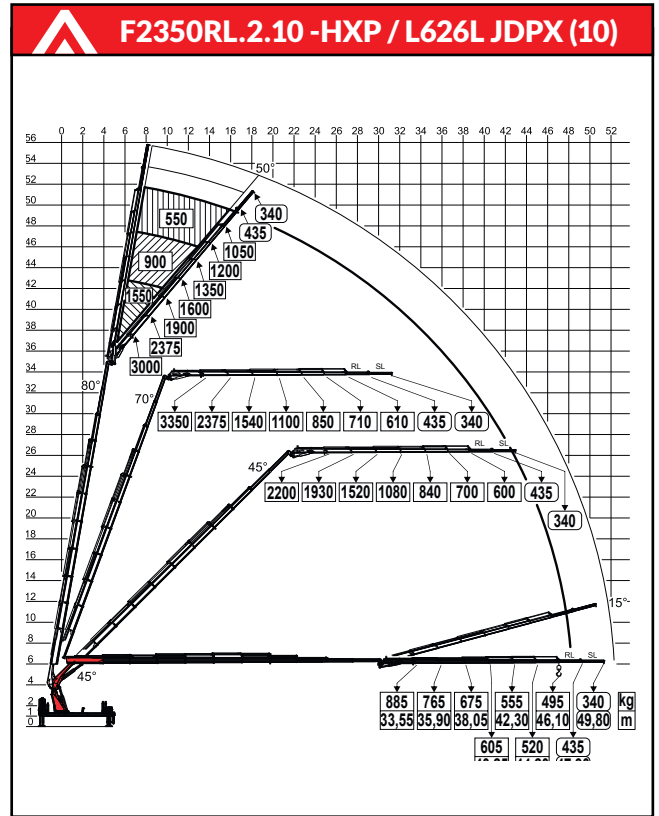
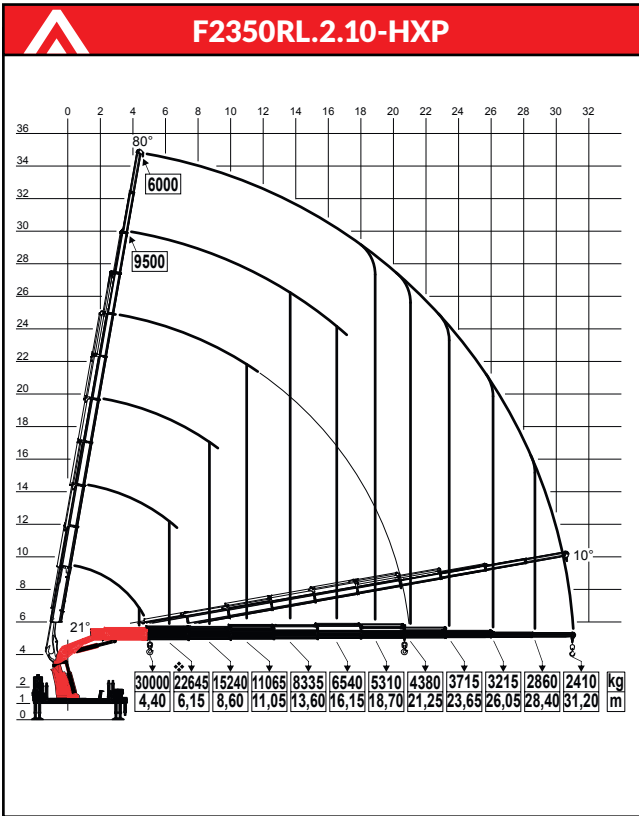


SB = 6000
MB = 7010
LB = 8360



SB = 6000
MB = 7010
LB = 8360









FASSI: the Italian excellence that moves the world

Every Fassi crane is born from a clear vision: to combine Italian manufacturing tradition with the most advanced engineering.

The result is a range of cranes designed, built and tested entirely in Italy, where expertise, precision and passion guide every stage of the process.

FASSI DNA

100% Made in Italy engineering

Entirely Italian design, synonymous with innovation and expertise.

Component quality

We manufacture components in-house, ensuring flexibility and consistent quality.

Uncompromising quality control

Rigorous testing to ensure constant safety and performance across cranes and components.



LEADER IN INNOVATION

www.fassi.com



FASSI GRU S.p.A.

Via Roma, 110 - 24021 Albino (BG) ITALY • Tel +39 035 776400 • fassif@fassicom

Data and descriptions are approximate and not binding
Realized by Fassi Gru S.p.A. © 2026 - all right reserved - Reproduction in whole or in part of texts and pictures published on this site on magnetic storage media, digital storage media etc. is prohibited